



Spring Housing / Actuator Replacement

Models: T7, Speed Scrub Rider

Installation Notice!

This notice applies to machines manufactured before serial number 10280389.

IMPORTANT: Before installing the new spring housing or actuator, the squeegee arm weldment must be modified as shown below. This will prevent the arm from coming in contact with the rear wheel axle, eliminating further spring housing or actuator damage.

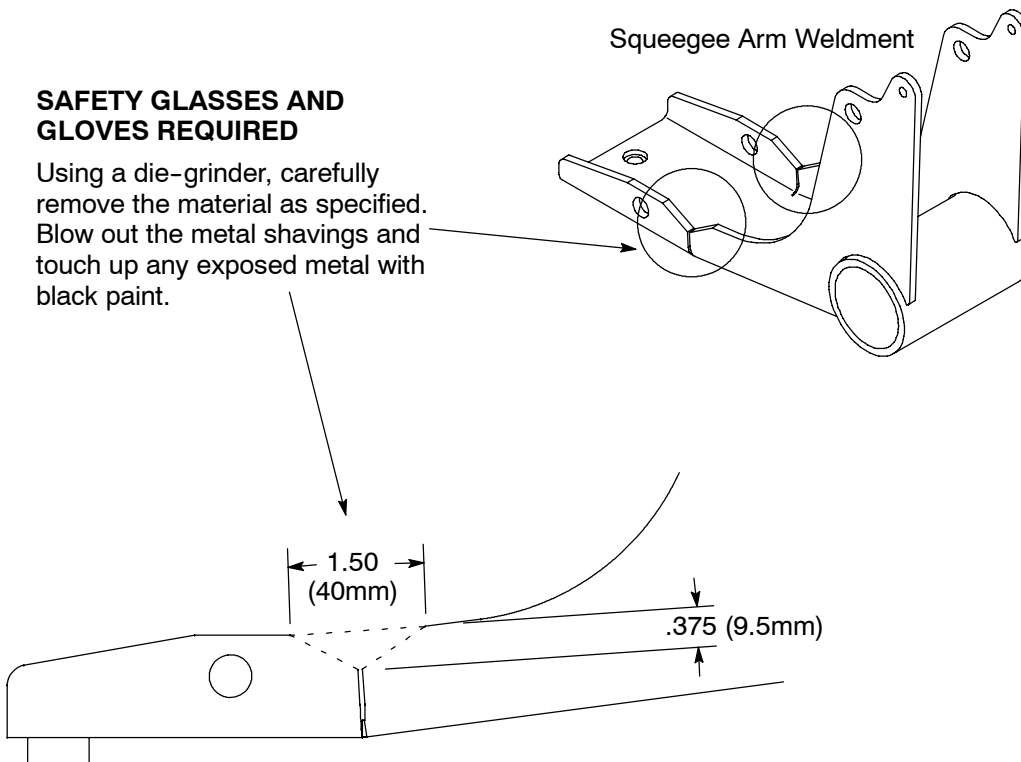
For a new modified squeegee arm weldment, order part no. 1031379.

Kit Installation Time: 2 Hours

SQUEEGEE ARM WELDMENT MODIFICATION

SAFETY GLASSES AND GLOVES REQUIRED

Using a die-grinder, carefully remove the material as specified. Blow out the metal shavings and touch up any exposed metal with black paint.



NOTE: After installing the replacement parts, cycle the ignition key on/off a couple of times to ensure proper clearance between the squeegee arm weldment and axle.